

**PRICE INCLUDES ACCOMMODATION
ALL GAME DRIVES, MEALS AND DRINKS
AIRPORT TRANSFERS AND ALL
CONSERVATION FEES**

£3000_{pp}

RAW
PHOTOGRAPHIC
EXPERIENCES + WORKSHOPS



ABOUT THIS PHOTOGRAPHY WORKSHOP

This trip, whilst a workshop / photographic course in nature, is open to anyone and everyone with a passion or interest in wildlife and nature photography. Whether you're an amateur or professional, there's ample opportunity to develop and hone your skills and creativity with a camera, whilst furthermore enjoying everything that the African bush has to offer.

We believe in delivering fantastic experiences as well as photographic tuition, and consequently a lot of research went into where we were going and what it can offer. Our choice of reserve and camp is based on the glowing feedback and impressive results fielded when we did our research, and upon visiting we instantly fell in love with what it has to offer – and we're so excited to share it with you!

Although this trip will be the first of its kind, it's being led by professionals in their field; from your enthusiastic photographic lead, your passionate field guide and attentive lodge staff. We can't wait to help you with photography and share those magical moments that only life amidst the African wilderness can provide.

FOR ANY AND ALL ENQUIRIES PLEASE CONTACT US AT

INFO@RAW-PHOTOGRAPHIC.COM



This workshop has been specifically designed by and will be conducted by Samuel Cox. Sam has been travelling to Africa for over 20 years, and has been a professional wildlife photographer for 10, with over 4 years experience in teaching photography workshops and living in the Greater Kruger area.



THE WORKSHOP

This workshop has been designed to increase the creative and technical skills that are fundamental in order to capture those jaw-dropping images of wildlife that so many of us hope to get. This is done through a 'back to basics' approach, where we discuss the basics of camera operating and then move on to the particulars of wildlife photography.

This includes how to tell a story and represent your subject with creative composition, how to freeze the action, showing motion, working with different types of light and even at night – where we go out looking for nocturnal animals! Of course, it's equally important that you learn more about the animals and the environment you're in, and this is where our expert guiding comes in to make sure you're in an advantageous position to get the shot needed.

Sam will be with you on every drive and activity, and in between will be hosting and conducting seminars, workshops and even exercises, depending on the needs of the guests. You'll find the theme for each day listed below, although please note they are subject to change depending on weather, guest needs and sighting opportunities.

1. CREATIVE COMPOSITION

How to frame your shots, what's most important in your picture, how to reinforce that and how to tell stories. All of these are incredibly important in attention-grabbing imagery.

2. WORKING WITH LIGHT

Typically, wildlife is more active first thing in the morning and late in the afternoon and evening. As such, it's important to know how to work with different type of lighting conditions, and how to keep shooting even when it's not ideal!

3. FREEZING AND SHOWING MOTION

Learning from 'working with light', we further showcase how to get maximum yield from different times of the day. From lots of sun allowing us to freeze the action, to showing the energy and movement of our subjects in low light situations.

4. SHOOTING AT NIGHT

When the sun goes down, a whole new world opens up – one we don't want to miss out on! Armed with a spotlight, we head out into the darkness to photograph Africa's nocturnal animals and learn how to photograph without the sun.

5. POST-PROCESSING WITH ADOBE LIGHTROOM

No photograph is finished until it's gone through development. By using Adobe Lightroom, we go through the process of how to import, protect, catalogue and edit your photographs. This is where your style can really show!



ABOUT YOUR LOCATION

The Greater Makalali Private Game Reserve (GMPGR), together with the Pidwa Wilderness Reserve forms the Greater Makalali Nature Reserve (GMNR), which is currently a 25,000-hectare game reserve and a registered Protected Area (PA).

The reserve overlooks the majestic Drakensberg mountain range in the Limpopo Province. It is bisected by the perennial Makhutswi River, a tributary of the Olifant's River, and includes approximately 10 km of the Selati River frontage. The Reserve was established to promote the conservation of the land and wildlife within its boundaries.

The reserve is home to the Big 5, with previously extirpated species including lion, elephant, rhino, hippo, cheetah, hyena and disease-free buffalo, being reintroduced. Leopard, brown hyena and the smaller mammal species as well as the endangered ground hornbill and the many threatened and endangered vulture and raptor species are also present on the reserve.

Your home base is a private camp and will be exclusive to you during your stay. It is an intimate camp that offers 5 luxurious thatched chalets, that overlook a watering hole with many sightings of general game and predators. A gourmet chef prepares and creates wonderful African cuisine and international food for its guests.





YOUR ITINERARY

DAY 1 JULY 12TH

- **13:00** Meet outside Hoedspruit airport and be greeted by your transfer driver who will take you to the lodge.
- **15:00** Arrive at your lodge, where you will meet your photographic lead host (Sam), your field guide (Claudia) and the rest of the lodge staff. Make yourself at home, freshen up and enjoy a cold drink whilst we discuss the upcoming week.
- **16:30** Afternoon game drive with welcoming sundowners.
- **19:00** Return to lodge for pre-drinks, followed by dinner.

DAY 2-6 JULY 13TH – 17TH

- **05:30** Early morning wake up.
- **06:00** Head out for a morning game drive with coffee and rusks.
- **09:30** Return to lodge for breakfast, followed by some down time.
- **12:00** Workshop
- **14:00** Lunch
- **15:30** Head out for afternoon game drive
- **19:00** Return to lodge for pre-drinks, followed by dinner.

* Some days will include an evening night drive or a session in astrophotography (photographing the stars). These take place after dinner and are organised in accordance with the weather and as such the schedule will be re-organised and discussed with all guests.

DAY 7 JULY 18TH

- **05:30** Early morning wake up.
- **06:00** Head out for final game drive.
- **09:00** Return to lodge for breakfast.
- **10:00** Depart lodge for airport.

*Please note this itinerary is an example of what to expect, final times and durations may be subject to change.



WHAT TO BRING

GENERAL

Your accommodation has a laundry service, so there's no need to waste space on extra clothes when you could pack more camera gear or leave space for curios and mementos to take home.

Sunblock, sunglasses, hats and closed-toe shoes are all essential items for protection against the elements. This trip is taking place during the country's winter, and as such mornings and evenings can get cold. Please make sure to bring some warmer clothes such as coats, scarfs and gloves. Clothing should preferably be neutral in colour.

MALARIA

The Makalali region is a **low risk** malaria area. It is best to consult your local Doctor for advice. Generally, the type of medication needed for the Kruger area is Malarone, Doxycycline or Melfloquine. Mosquitos are more prevalent in the wet, warmer season and not so active during winter.

PHOTOGRAPHY

Whilst this workshop is open to anyone with any kind of photographic equipment (from smartphones to professional gear) – we do advise bringing out a minimum amount of kit to ensure you get the best out of your time.

- A DSLR or mirrorless camera with:-
 - A wide angle lens
 - A zoom lens (70-300 or longer)
 - Tripod
 - Extra batteries and spare memory cards
 - Battery charger and power adaptor
(for South Africa outlets)
- Laptop with Adobe Lightroom Classic installed.
- External hard drive is recommended, but not essential.



WHAT'S INCLUDED

INCLUDED

- Road transfer from Hoedspruit (/Eastgate) airport to lodge and return transfer back to airport
- All meals
- All drinks (coffee, tea, soft drinks, local alcohol)
- All game drives and photographic activities
- Photographic guidance and tuition throughout
- Midday workshops and seminars
- Wi-fi
- Pool Access
- Laundry Service
- All conservation fees and levies

NOT INCLUDED

- International and internal flights
- Travel insurance
- Premium alcohol
- Curios and mementos
- Items of a personal nature
- Tips and gratuities for lodge / camp staff (cash)
- Loaning or renting of camera equipment or computer / laptop



TRAVELLING IN 2021

BOOKING TERMS AND CONDITIONS

Naturally, there are a lot of concerns regarding travel given the recent Covid-19 pandemic and subsequent travel bans and restrictions.

We want to assure all our guests that our trips are designed to look after them. Safety is our number one priority, especially when working with wildlife, and being able to provide the high standard of experience whilst adhering to strict safety protocols is something that we and our partnering lodges and reserves strictly adhere to.

As such, there will be limits to the amount of guests that can be on any vehicle or inhabiting any lodge at a time. Face masks and hand sanitizing will more than likely be the norm for quite a while, but we're confident that, despite these regulations, we will be able to offer memorable and life changing experiences and photographic opportunities to guests as early as June 2021.

Our terms and conditions for all trips have been updated to incorporate and cover any issues, complications and restrictions that have arisen due to the Covid-19 pandemic. This is done for the wellbeing and safety of all our guests, hosts and partners – to again, further ensure that safety is our number one priority for everyone. Our full terms and conditions are sent as a separate PDF document to guests upon enquiry.

As always, if there's any questions or concerns related to travel and our trips, please do not hesitate and we will answer quickly and honestly.

In order to fully book a trip, please contact us via our email address (info@raw-photographic.com), or on our website via the *Enquire Now* button on our *Photo Safari* page or through our booking form on the *Contact Us* page.

We will get in touch and supply you with our Terms & Conditions and a Registration Form, which must be filled in, signed and returned to us before we can finalize your booking. This includes details such as medical and dietary requirements, so information must be accurate and honest.

A 40% non-refundable deposit is due within 14 days of booking. This payment must be done via bank transfer.

At this point, your booking is held up until 8 weeks before departure of your safari, by which time you need to have paid the remaining amount. If payment has not been made at this time, RAW Photographic reserves the right to cancel your booking to open the space for another potential guest.

Once final payment has been made, we will confirm your position on our safari and communicate further details of the trip as the need arises. Other than that, it's a case of waiting and we look forward to seeing you in Africa!

The full list of our Terms and Conditions will be sent to you upon enquiry of booking. It's important that the terms and conditions are read, as by signing the Registration Form you confirm that you've read and agreed to all that's listed.



FREQUENTLY ASKED QUESTIONS

Is this trip right for me?

This trip is great for anyone with a love for photography, but we do cater specifically for amateurs and those wanting to learn. If you're still unsure, get in touch and we can talk more in depth about what would make a safari great for you.

Is it safe to travel?

We specifically targeted mid-2021 to start running trips to allow as much time as possible for the world to recover from the effects of Covid-19. There are protocols put in place throughout your entire trip, in line with government and official demands, to ensure that safety for everyone involved is the utmost priority. As things change over time, we will adapt and update our protocols and the information we give to our guests. Once again, if you're still unsure, please get in touch so we can more in depth.

How much is my deposit?

Your deposit is 40% of the inclusive cost of your trip, as advertised. So for this trip, running at £3,000 per person, the deposit would be £1,200 per person. This will need to be paid within 14 days of booking and is non-refundable unless the trip is cancelled from our end.

What payment method do you accept?

Currently we can only accept payment as a bank transfer to a UK bank account.

Should I bring a laptop? And do I need editing software?

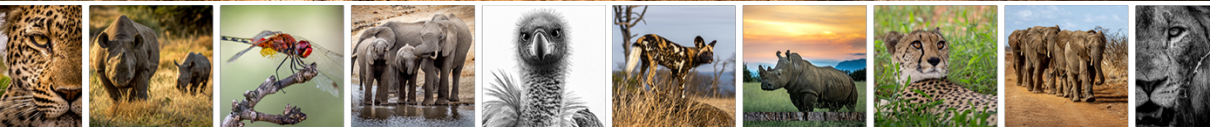
A laptop with editing software is ideal for this trip, as we do cover cataloging and editing photographs as part of the workshop. We recommend you download and install **Adobe Lightroom Classic**, as that's the specific software we will be using, but we can accommodate those without a laptop or editing program, but it's still recommended to ensure you get the most out of your trip.

Can a non-photographer join this trip? Will they enjoy it?

Even though we run specialized photographic safaris, we also accommodate those with no knowledge or interest in photography. We believe in putting experience above all else, so any non-photographers will still have a great experience.

How much should I tip?

Tipping / gratuities is not included in the cost, as it needs to be cash in order to be equally split amongst the lodge staff that look after you during your stay. Whilst there's no set number for a tip, we recommend a minimum of R1000 per person. This money will be given to the lodge manager at the end of your stay, to be distributed afterwards.



WE LOOK FORWARD TO MEETING YOU!
THE RAW PHOTOGRAPHIC TEAM

