



SIX NIGHTS, EXCLUSIVE USE OF CAMP, INCLUDES ALL MEALS,  
ALL GAME DRIVES, PHOTOGRAPHIC TUITION AND LOCAL AIRPORT  
TRANSFERS - INTIMATE GROUP SIZE, LIMIT OF SIX

# KLASERIE

PHOTOGRAPHIC SAFARI

JULY 22ND - 28TH

ONLY  
**£3000**  
(PER PERSON)

**RAW**  
PHOTOGRAPHIC





# ABOUT THIS PHOTOGRAPHIC SAFARI

This safari offers everything you could want in a photographic safari and African bush experience, whilst also maintaining a touch of comfort and luxury.

Your adventures in the bush will happen via two game drives per day in open 4x4 vehicles—one early morning and one late afternoon/early evening. Every step of the way you'll be guided by your photographic lead and a professional field guide, who will work together to make sure you not only get the best sightings possible, but are also in a position to get the best photographs too!

In between drives there's ample time to relax and enjoy the swimming pool or stay hydrated at the bar, but there's also midday photographic presentations which you don't want to miss!

**FOR ANY AND ALL ENQUIRIES PLEASE CONTACT US AT**

**[INFO@RAW-PHOTOGRAPHIC.COM](mailto:INFO@RAW-PHOTOGRAPHIC.COM)**



*This photographic safari has been specifically designed by and will be conducted by Samuel Cox. Sam has been travelling to Africa for over 20 years, and has been a professional wildlife photographer for 10, with over 4 years experience in teaching photography workshops and living in the Greater Kruger area.*



# ABOUT YOUR LOCATION

Established in 1969 and officially proclaimed a nature reserve in 1972, **Klaserie** is one of the largest privately owned nature reserves in South Africa. The private nature of this wilderness sanctuary enables one to embrace the African bushveld in one's own time - to take in the sounds, sights and smells that make the bushveld such a unique experience.

Safaris within this untamed region of the Greater Kruger National Park focus on the bush and its ecosystems, with the added excitement of getting involved in the tracking of Africa's big game. Wildlife wanders freely over vast areas and you are likely to see all the usual animals of the African bush including lion, elephant, white rhino, leopard and many antelopes. The remoteness of your location will allow extensive time with sightings.

Your home for six days is a comfortable and luxurious camp, and it will be exclusive to just you and your group for the duration. Five spacious en-suite rooms, elegantly decorated, all come equipped with air conditioning, mosquito nets and mini bars. Private patios overlook a waterhole, as does the camp swimming pool. The camp also hosts multiple lounge areas, a library, a fully stocked bar with wi-fi and dinners will take place in either the dining room or in the outside boma, weather depending.

This location is perfect for those wanting to get away and be immersed in the middle of the African bush, whilst also retaining the comforts and luxuries of a well-deserved holiday.





# YOUR ITINERARY

## DAY 1

- **Early afternoon:** Meet outside Hoedspruit airport and be greeted by Samuel Cox, your photographic lead and the founder of RAW Photographic.
  - **Arrive at your lodge**, where you will meet the lodge staff. Make yourself at home, freshen up and enjoy a cold drink whilst we discuss the upcoming week.
  - **15:30** Afternoon game drive with welcoming sundowners.
  - **18:30** Return to lodge for pre-drinks, followed by dinner.
- 

## DAY 2-5

- **06:00** Early morning wake up for coffee and rusks.
  - **06:30** Head out for a morning game drive.
  - **10:00** Return to lodge for breakfast / brunch, followed by some down time.
  - **12:00** Downtime or optional photographic seminars
  - **14:30** Lunch
  - **15:30** Head out for afternoon game drive
  - **18:30** Return to lodge for pre-drinks, followed by dinner.
- 

## DAY 6

- **06:00** Early morning wake up for coffee and rusks.
- **06:30** Head out for final game drive.
- **10:00** Return to lodge for breakfast.
- **11:00** Check out and depart lodge for airport.

\*Please note this itinerary is an example of what to expect, final times and durations may be subject to change.





# WHAT TO BRING

## GENERAL

Your accommodation has a laundry service, so there's no need to waste space on extra clothes when you could pack more camera gear or leave space for curios and mementos to take home.

Sunblock, sunglasses, hats and closed-toe shoes are all essential items for protection against the elements. This trip is taking place during the country's winter, and as such mornings and evenings can get cold. Please make sure to bring some warmer clothes such as coats, scarfs and gloves. Clothing should preferably be neutral in colour.

---

## MALARIA

The Klaserie region is a **moderate risk** malaria area. It is best to consult your local Doctor for advice. Generally, the type of medication needed for the Kruger area is Malarone, Doxycycline or Melfloquine. Mosquitos are more prevalent in the wet, warmer season and not so active during winter.

---

## PHOTOGRAPHY

Whilst this safari is open to anyone with any kind of photographic equipment (from smartphones to professional gear) – we do advise bringing out a minimum amount of kit to ensure you get the best out of your time.

- A DSLR or mirrorless camera with:-
  - A wide angle lens
  - A zoom lens (70-300 or longer)
  - Tripod
  - Extra batteries and spare memory cards
  - Battery charger and power adaptor  
(for South Africa outlets)
- Laptop with Adobe Lightroom Classic installed.
- External hard drive is recommended, but not essential.



# WHAT'S INCLUDED

## PRICE INCLUDES

- Road transfer from Hoedspruit (/Eastgate) airport to lodge and return transfer back to airport
- All meals
- Tea, coffee water + complimentary sundowners drink
- All game drives and photographic activities
- Photographic guidance and tuition throughout
- Midday photographic seminars
- Wi-fi
- Pool Access
- All conservation fees and levies

---

## PRICE DOES NOT INCLUDE

- International and internal flights
- Travel insurance
- Soft drinks and alcohol
- Curios and mementos
- Items of a personal nature
- Laundry Service
- Tips and gratuities for lodge / camp staff (cash)
- Loaning or renting of camera equipment or computer / laptop



# TRAVELLING IN 2021

# BOOKING TERMS AND CONDITIONS

Naturally, there are a lot of concerns regarding travel given the recent Covid-19 pandemic and subsequent travel bans and restrictions.

We want to assure all our guests that our trips are designed to look after them. Safety is our number one priority, especially when working with wildlife, and being able to provide the high standard of experience whilst adhering to strict safety protocols is something that we and our partnering lodges and reserves strictly adhere to.

As such, there will be limits to the amount of guests that can be on any vehicle or inhabiting any lodge at a time. Face masks and hand sanitizing will more than likely be the norm for quite a while, but we're confident that, despite these regulations, we will be able to offer memorable and life changing experiences and photographic opportunities to guests as early as June 2021.

Our terms and conditions for all trips have been updated to incorporate and cover any issues, complications and restrictions that have arisen due to the Covid-19 pandemic. This is done for the wellbeing and safety of all our guests, hosts and partners – to again, further ensure that safety is our number one priority for everyone. Our full terms and conditions are sent as a separate PDF document to guests upon enquiry.

As always, if there's any questions or concerns related to travel and our trips, please do not hesitate and we will answer quickly and honestly.

In order to fully book a trip, please contact us via our email address ([info@raw-photographic.com](mailto:info@raw-photographic.com)), or on our website via the *Enquire Now* button on our *Photo Safari* page or through our booking form on the *Contact Us* page.

We will get in touch and supply you with our Terms & Conditions and a Registration Form, which must be filled in, signed and returned to us before we can finalize your booking. This includes details such as medical and dietary requirements, so information must be accurate and honest.

A 40% non-refundable deposit is due within 14 days of booking. This payment must be done via bank transfer.

At this point, your booking is held up until 8 weeks before departure of your safari, by which time you need to have paid the remaining amount. If payment has not been made at this time, RAW Photographic reserves the right to cancel your booking to open the space for another potential guest.

Once final payment has been made, we will confirm your position on our safari and communicate further details of the trip as the need arises. Other than that, it's a case of waiting and we look forward to seeing you in Africa!

The full list of our Terms and Conditions will be sent to you upon enquiry of booking. It's important that the terms and conditions are read, as by signing the Registration Form you confirm that you've read and agreed to all that's listed.





# FREQUENTLY ASKED QUESTIONS

## *Is this trip right for me?*

This trip is great for anyone with a love for photography, but we do cater specifically for amateurs and those wanting to learn. If you're still unsure, get in touch and we can talk more in depth about what would make a safari great for you.

## *Is it safe to travel?*

We specifically targeted mid-2021 to start running trips to allow as much time as possible for the world to recover from the effects of Covid-19. There are protocols put in place throughout your entire trip, in line with government and official demands, to ensure that safety for everyone involved is the utmost priority. As things change over time, we will adapt and update our protocols and the information we give to our guests. Once again, if you're still unsure, please get in touch so we can more in depth.

## *How much is my deposit?*

Your deposit is 40% of the inclusive cost of your trip, as advertised. So for this trip, running at £3,000 per person, the deposit would be £1,200 per person. This will need to be paid within 14 days of booking and is non-refundable unless the trip is cancelled from our end.

## *What payment method do you accept?*

Currently we can only accept payment as a bank transfer to a UK bank account.

## *Should I bring a laptop? And do I need editing software?*

A laptop with editing software is ideal for this trip, as we do cover cataloging and editing photographs as part of the workshop. We recommend you download and install **Adobe Lightroom Classic**, as that's the specific software we will be using, but we can accommodate those without a laptop or editing program, but it's still recommended to ensure you get the most out of your trip.

## *Can a non-photographer join this trip? Will they enjoy it?*

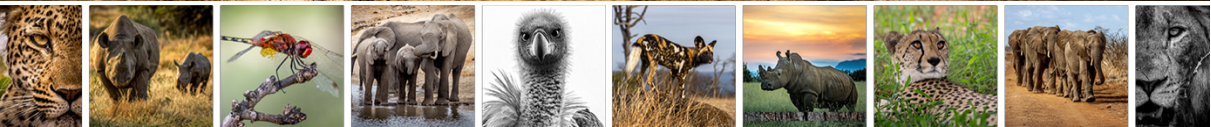
Even though we run specialized photographic safaris, we also accommodate those with no knowledge or interest in photography. We believe in putting experience above all else, so any non-photographers will still have a great experience.

## *How much should I tip?*

Tipping / gratuities is not included in the cost, as it needs to be cash in order to be equally split amongst the lodge staff that look after you during your stay. Whilst there's no set number for a tip, we recommend a minimum of R1000 per per guest.

This money will be given to the lodge manager at the end of your stay, to be distributed afterwards.





**WE LOOK FORWARD TO MEETING YOU!**  
**THE RAW PHOTOGRAPHIC TEAM**

